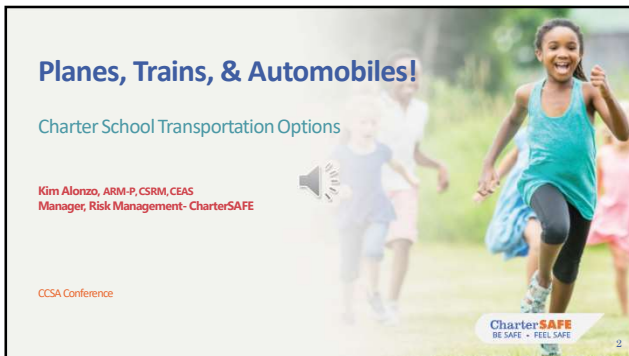
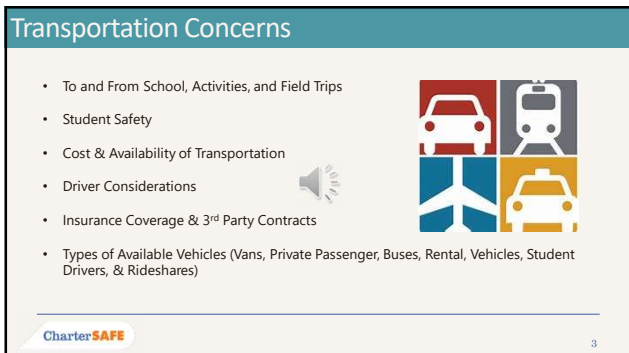




1





2



3

Available Transportation Alternatives

- School Owned Buses & Vehicles
- District Shared Bus Transportation
- Employee Vehicles
- Volunteer Vehicles
- Public Transportation
- Carpools
- Rideshares






CharterSAFE 4

4

School Owned Buses

- Cost to Purchase & Maintain
- Finding Qualified Drivers
(Commercial Driver's License; Part- Time or Independent Contractor; Worker's Compensation & Benefits)
- Supervision on Buses (Cameras, Aides)
- No Third Party to Assume the Risk





CharterSAFE 5

5

School Owned Buses (Cont'd)

- Many responsibilities for owners:
 - Seatbelts CA Vehicle Code 27316 (Buses 2004/2005 or Newer)
 - Transportation Safety Plan (Boarding, Exiting, Crosswalks, RR Crossing, Emergencies, Etc.)
 - Annual California Highway Patrol (CHP) Inspection
 - Maintenance Every 3,000 miles / 45 days
 - Qualified Driver- CDL, Passenger Endorsement, School Bus Certificate issued by CHP
 - Substance Abuse Testing
- Other Issues:
 - Supervision- Bullying Assaults, Objects Thrown from Bus
 - Security Cameras- Formal Use Policy Required
- Buses are Vulnerable to Vandalism




CharterSAFE 6

6

District Shared Bus Transportation

- Willingness Of District
- Flexibility – Routes, Timelines, etc.
- To/ From School *and* Activities?
- Insurance Issues, Risk Transfer, MOU
- Cost – Compared To Other Methods



CharterSAFE 7

7

Use of Vans

- California And Federal Law Strictly Limits Van Usage By Schools
- Any Van Designed To Carry More Than 10 Passengers (Including The Driver) Must Meet The Same Safety Standards As A School Bus.
 - Driver With A Commercial Driver's License (CDL And School Bus Certificate)
 - Stop Signal Arm
 - Emergency Exit
 - Rollover Protection, Certain Body Strength and Crash Protection
 - Specific Seat Back Measurements
 - Four (4) Red Signal Lamps
- Removing seats to reduce capacity does not make a difference.

CharterSAFE 8

8

Charter Buses & Public Transportation

Charter Buses

- Risk Transfer- Verify Insurance (School Named As Additional Insured)
- Learn About Company's Policies (Drive Time, Drug Testing, etc.)
- Verify that they are Approved by the California PUC via https://apps.cpuc.ca.gov/apex/?_af=03-35-0-NO-35

Public Transportation

- Safety And Supervision; Exposure To Public
- Point-to-Point or Some Walking
- Weather

CharterSAFE 9

9

Student Drivers

- Parent/Guardian Must Sign A Student Transportation Permission Form
- Personal Vehicle Information Must Be On File At School (Including Copy Of A Valid Driver License, Proof Of Insurance, And The Activity Schedule)
- Students Are To Notify The Coach/ Advisor That They Will Be Providing Their Own Transportation Not Less Than 24 Hours Before An Activity. Students Should Not Transport Other Students.
- Privilege To Drive To/ From An Activity Is At The Discretion Of Staff and Can Be Relinquished At Any Time
- Students May Only Drive To Off-campus Practices Or Activities Within A 40-mile Radius Of Their School
- All Requirements Of The California Provisional Driver License Must Be Followed

CharterSAFE 10

10

Carpools & Rideshare Companies

Carpools

- Same Driver Issues As Volunteers If School Organizes
- Parent Group- Managed Alternative

Rideshare Companies


- Uber And Lyft Do Not Allow Drivers To Take Unaccompanied Minors
- Rideshares Designed for Kids- HopSkipDrive, Zum, Kango (do they perform background checks, fingerprint clearance, vehicle inspections; and safety training?)

CharterSAFE 11

11

Staff and Volunteer Vehicles

- Written Transportation Policy
- Minimum Requirements to Approve Drivers
 Drivers should be at least 24 years of age and have the following information on file with the school:
 Driver application
 Live Scan background check
 TB Risk Assessment
 Signed Boundaries Policy to minimize the risk of sexual misconduct
 Valid CA driver's license
 Valid vehicle registration
- Insurance – Whose Coverage (Exclusion For Work-Related Use?), Adequate
- Alone-time (No Student Alone With Staff Except For Emergencies)
- Personal Stops



CharterSAFE 12

12

Hired and Non- Owned Autos

- Renting Vehicles May Be an Efficient and Cost- Effective Option
- Vehicles that are Rented, Leased, or Borrowed Covered Under Hired Auto
- Personal Vehicles Used by Employees or Volunteers Covered Under Non- Owned Auto

Hired and Non-Owned Auto Liability Examples:

- ✓ Employees Driving to Workshops or Conferences
- ✓ Office Staff Taking Deposits to Bank or Running Errands
- ✓ Volunteers Picking Up Food for After-School Event
- ✓ Transporting Supplies Between School Sites
- ✓ Renting a Car or Van to Transport Students to an Activity

CharterSAFE 13

13

Obtaining Employee & Volunteer Driving Records

California DMV Pull Notice Program For Employers

- Application Online (Form INF 1104 EPN)
- Pull Notice Contract Required
- Permission Of Employee To Run Report
- Provides Updates; Enrollment And Deletions

Volunteer Obtains Own Driving Record From DMV and Should Submit to School Annually

CharterSAFE 14

14

Reviewing Employee & Volunteer Driving Records

- **Violations That Should Not Be Approved:**
Four (4) or more moving violations and/or accidents whether or not at-fault; Driving Under the Influence of Drugs or Alcohol; Failure to Stop for an Accident; Homicide, manslaughter or assault arising out of the operation of a motor vehicle; Driving with a Revoked or Suspended License; Possession of an Opened Container of Alcohol in a Vehicle; Speed Contest; Drag or Highway Racing; Attempting to Elude a Police Officer; Hit and Run; and Reckless Driving.
- **Violations May Be Subject To A Written Warning Status:**
Two (2) or more moving violations; One (1) accident and (1) moving violation; or Two (2) or more seat belt violations.
- **Violations May Be Placed On Probationary Status:**
Three (3) or more moving violations and/or accidents whether or not at-fault (e.g. 2 moving violations and 1 accident or combination thereof); or One (1) at-fault accident.

CharterSAFE 15

15

Your School's Insurance Coverage

- Are Employees and Volunteers "Additional Insureds" under your automobile liability insurance?
- Does your automobile liability insurance cover non-owned and hired vehicles?
- Does your policy provide adequate limits of coverage for your school's exposure?



CharterSAFE 16

16

Activity Permission Slips

- Permission/Waivers Should Be Specific As To Means Of Transportation (Informed Consent)
- Method Of Transportation:
 - Student Will Ride On Bus
 - Student Is Walking
 - Student Will Ride In Private vehicle
 - Other: _____

CharterSAFE 17

17

Reducing & Transferring Risk

- Maintaining Proof of Insurance and Certificates of Insurance
- Check Driving Record At Least Once Per Year
- Evaluate Insurance Limits for All Methods of Transportation
- Vehicle Inspection Programs
- Obtaining Signed Permission Slips and Waivers (Informed Consent)
- Implementing Written Transportation Policies and Following the Guidelines

CharterSAFE 18


18

“
**BE
SAFE.
FEEL
SAFE.**
”

Insurance when you need it.
Safety partners so you don't.

Charter**SAFE**

THANK YOU FOR JOINING!

 **Kim Alonzo, ARM-P, CSRM, CEAS**
Manager, Risk Management- CharterSAFE
kalonzo@chartersafe.org
(818) 394-6532

Protecting **Schools**. Promoting **Safety**. Customizing **Insurance**.
